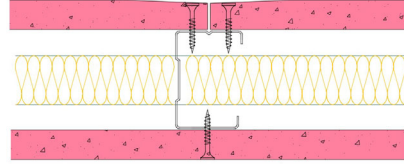


## 50-B-56(25) - SPEEDLINE System Data Sheet - Version V1 (24-10-23)

SPEEDLINE 50mm 'C' Stud Partition @600mm Ctrs,  
with BG Gyproc 15mm FireLine each side, 25mm  
APR



### System Performance Breakdown

Fire Resistance:

BS476 Part 22:1987:

Test Ref & Date or Applied Ref & Report:

Max Height:

Thickness:

Duty Grade: BS 5234: Part 2:1992:

Sound Insulation:

**60/60 Minutes** (Integrity/Insulation).

**BTC 17441F - BRE Report P102396-1011A**

**Refer to Speedline Specification Clause**

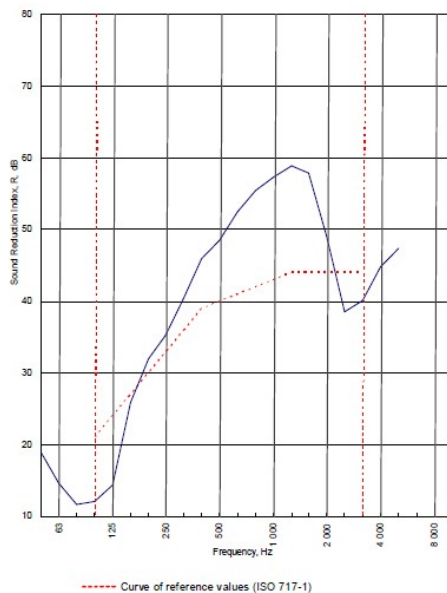
**82 mm.** (At Base Track, Excluding Finishes)

**Heavy - Annexes A-F**

**40  $R_{w}$ dB**, Date Tested or Assessed Against - 50-B-52(25)


Test Code:  
H17480AA  
Test Date:  
12/07/2011


Freq. Hz	R dB
50	19.0
63	14.6
80	11.7
100	12.1
125	14.3
160	25.8
200	32.0
250	35.3
315	40.3
400	45.9
500	48.5
630	52.5
800	55.5
1 000	57.3
1 250	58.8
1 600	57.9
2 000	49.0
2 500	38.5
3 150	40.1
4 000	44.8
5 000	47.3
6 300	
8 000	
10 000	





Rating according to BS EN ISO 717-1:1997	<b><math>R_w</math> (C;Ctr) = 40 (-4;-10) dB</b>		
Evaluation based on laboratory measurement results obtained by an engineering method:	Max dev. 9.7 dB at 125 Hz		
	$C_{50-3150} = -4$ dB	$C_{50-5000} = -3$ dB	$C_{100-5000} = -3$ dB
	$C_{125-3150} = -13$ dB	$C_{125-5000} = -13$ dB	$C_{125-6000} = -10$ dB

TESTED AT ONE OF THE UKAS ACCREDITED LABORATORIES BELOW

B.T.C (H-Ref on Graph) 

B.R.E 

AIRO 

S.R.L 

Customer: Metsec plc Hepsec Division

BTC 17480A: Page 9 of 11



SPEEDLINE Drywall Systems, Adsetts House, 16 Europa View, Sheffield Business Park, Sheffield, S9 1XH.

Tel: 0114 231 8030.

Email: [enquiries@speedlinedrywall.co.uk](mailto:enquiries@speedlinedrywall.co.uk)

(As per the requirements set out in ISO/IEC 17025:2017 regarding test data the results stated have been carried out by voestalpine Metsec plc as part of the contract to supply Speedline Metal Sections to SIG Plc)